

## Key Investor Information

This document provides you with key investor information about this fund. It is not marketing material. The information is required by law to help you understand the nature and the risks of investing in this fund. You are advised to read it so you can make an informed decision about whether to invest.

### The SEI Conservative Fund, a sub fund of SEI Global Assets Fund PLC

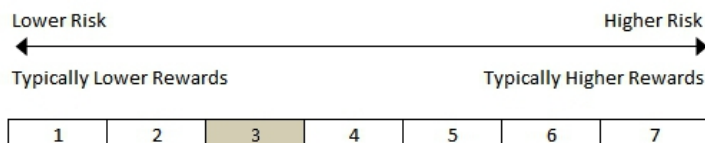
Sterling Wealth A Distributing share class -- ISIN IE00B616BM72

**Management Company:** SEI Investments Global, Limited, part of the SEI group of companies

## Objectives and Investment Policy

- The objective of the Fund is to protect against the loss of capital and provide the opportunity for capital growth and income.
- The Fund invests across different asset classes to balance the risk of capital loss and growth. This diversification can help to mitigate the effects of a falling market in any single asset class.
- The Fund mainly invests in Sterling priced short term (397 days) bonds, global short duration bonds (which are those less sensitive to interest rate movements) and low volatility companies (which are those less sensitive to equity market movements). The Fund may also invest in longer term government and corporate bonds, companies in developed market countries and commodity-linked investments.
- While the Fund may invest globally, it is generally expected that at least 30% will be invested in the U.K.
- The Fund may invest substantially in other funds, including SEI Funds, whose investment objectives and policies are consistent with the above. No more than 20% will be held in any one fund.
- The Fund may use derivatives (an instrument that derives its value from another underlying asset) for both investment purposes and in an attempt to reduce risk, reduce costs and to generate additional income.
- The base currency of the Fund is Sterling.
- Shareholders may redeem shares on demand on any dealing day. A dealing day for this Fund is any business day for both the London and New York Stock Exchanges and for banks in either Dublin or London except 24 December.
- Income generated by the Fund is retained within the NAV (net asset value of the Fund) for accumulating classes and distributed from the NAV for distributing classes.
- The Fund is suitable for investors seeking a medium to long term opportunity for conservative capital growth and income.
- For further details of the investment objectives and policies please refer to the prospectus of the Fund.

## Risk And Reward Profile



- Historical data may not be a reliable indicator for the future.
- The risk category shown is not guaranteed and may shift over time.
- The lowest category does not mean "risk free".
- The Fund is in category 3 because its NAV has experienced below average volatility historically due to the type of investments that it is permitted to hold as well as the various risks that the Fund may be exposed to.
- A decline in the credit quality, or perceived credit quality, of an issuer could cause the value of investments held by the Fund to decline. Also, the issuer of an investment held by the Fund may not meet its payment obligations.
- Increases in interest rates are likely to cause the value of bonds or similar assets held by the Fund to decline in value.
- Equities are subject to material market risk. Their values tend to be volatile and can decline quickly or over extended periods of time.
- For further details of the risks, please refer to the Fund's prospectus.

## Charges for this Fund

The charges you pay are used to pay the costs of running the Fund including the costs of marketing and distributing it. These charges reduce the potential growth of your investment.

### One-off charges taken before or after you invest.

**Entry charge** up to 4%

**Exit charge** up to 3%

This is the maximum that might be taken out of your money before it is invested or before the proceeds of your investment are paid out. The exit charge is a levy on large redemptions and is retained by the Fund.

### Charges taken from the Fund over a year

**Ongoing charge** 0.92%

### Charges taken from the Fund under certain specific conditions

**Performance fee** None

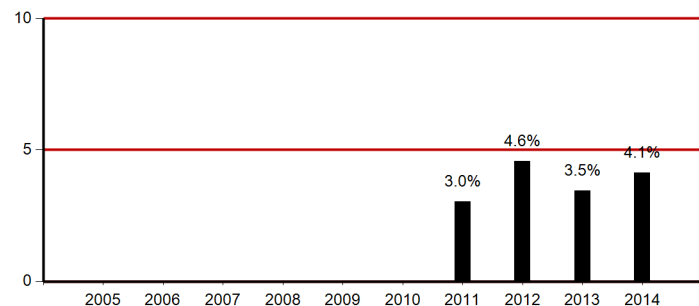
The **entry** and **exit** charges shown are maximum figures. In some cases you might pay less – you can find this out from your financial adviser or distributor.

The **ongoing** charges figure is based on expenses for the year ending 30 June 2015. If the share class launched after this date then this figure is an estimate of the charges. This figure may vary from year to year and excludes portfolio transaction costs.

**For more information about charges, please see the Fees & Expenses section of the Fund's prospectus which is available at**

[www.seic.com/DublinFundDocs](http://www.seic.com/DublinFundDocs)

## Past Performance



The past performance of the Fund should not be viewed as a guide to future performance.

The calculation of past performance is net of all charges and fees payable by the Fund.

The Fund was launched in February 2010 and this share class was launched in February 2010.

The past performance has been calculated in the currency of the share class.

## Practical Information

The address of the Fund is Styne House, Upper Hatch Street, Dublin 2, Ireland.

The Custodian is Brown Brothers Harriman Trustee Services (Ireland) Limited.

The Distributor of the Fund is SEI Investments (Europe) Limited, part of the SEI group of companies.

Further information about the Fund (such as prospectus, report & accounts etc) and other available share classes can be obtained from [www.seic.com/DublinFundDocs](http://www.seic.com/DublinFundDocs) and price information can be obtained from the offshore funds section of [www.fundlistings.com](http://www.fundlistings.com).

SEI Global Assets Fund plc is incorporated in Ireland as an umbrella fund with segregated liability between its sub funds availing of the provisions of the Companies Act 2014. It is intended that each sub-fund will have segregated liability from the other sub-funds and SEI Global Assets Fund plc will not be liable as a whole to third parties for the liability of each sub fund. However, this segregation may not be recognized in all jurisdictions and this may affect the value of your investment.

Irish tax legislation may have an impact on the personal tax position of investors.

SEI Investments Global, Ltd may be held liable solely on the basis of any statement contained in this document that is misleading, inaccurate or inconsistent with the relevant parts of the prospectus of the Fund.

Shares of one class of this Fund may be switched for shares of another class of another Fund.

*This Fund is authorised in Ireland and regulated by the Central Bank of Ireland. SEI Investments Global, Limited is authorised in Ireland and regulated by the Central Bank of Ireland. This key investor information is accurate as of 18th September 2015.*